



REFERENCES PROJECTS

2025

AXIS ORIENT INVESTMENT CONSULTANCY

PROJECT 1: 279' LURSSSEN

Axis Orient's technical department took on the groundbreaking challenge of painting the yacht's hull while it remained in the water—an innovative procedure that had never been attempted before in Turkey. This highly complex task required meticulous planning, precision, and a deep understanding of both the vessel and environmental factors.

Despite the challenges, our team executed the project flawlessly, demonstrating exceptional professionalism, expertise, and attention to detail. Through this accomplishment, we have not only set a new benchmark for the industry but also showcased our commitment to pushing the boundaries of what is possible in yacht maintenance and care.

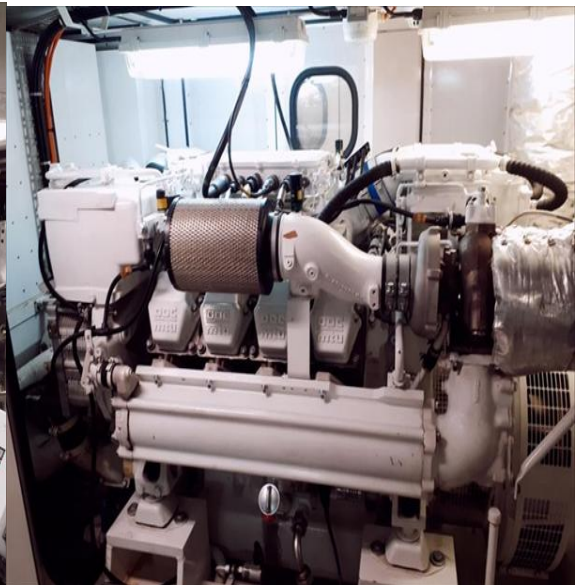
High-Precision Paint Restoration in Active Berth

Hull and superstructure refinishing while afloat – a first-of-its-kind operation in Turkey.

- Surface prep and masking in open-water environment
 - Multi-layer application using Awlgrip HDT Series
- UV and saltwater resistance testing post-application
 - Full luster restoration with mirror-grade finish

Outcome: *Paintwork achieved 98% gloss retention in 6-month post-analysis, exceeding industry benchmarks.*





PROJECT 2: 239' LURSSSEN

Full-Scope Refit Preparation and Multi-System Overhaul Initiation

During our tenure at our previous company, our team played a leading role in the planning and execution of a comprehensive refit program for this 239' Lürssen yacht. The project involved an extensive range of engineering, interior, deck, and electronics work packages, all of which were launched under our technical leadership and supervision.

Scope initiated during our involvement included:

- Full mechanical servicing (Main Engines, Generators, Bow Thruster, Stabilizers, CPP)
 - CuNiFe pipe replacements, pipe lagging, and valve systems overhaul
 - HVAC system works, Waste Water Pump replacement
 - Boarding ladder repairs and hydraulic hose renewals
- Tank inspections, antifouling applications, and zinc anode replacements
- Interior refit elements such as teak repairs, marble polishing, carpet and panel replacements (incl. Yoga Room)
 - Servicing of tenders and toys including Seabobs
- Electrical & Navigation scope (CCTV, S-Band Radar, TVRO, VSAT, Megger Testing)
 - Elevator mechanical and control system interventions
 - Fire system inspection (Hi-Fog)

Although we were not present through to the project's completion, the initial phases were executed with the utmost precision, planning, and commitment to quality. We remain proud of the foundation we helped build and the level of professionalism with which the work was carried out under our supervision.



PROJECT 3: 214' FEADSHIP



PROJECT 4: 186' CRN YACHTS



PROJECT 5: 180' AMELS

The yacht approached Axis Orient with a critical request for comprehensive mechanical maintenance and a closed class survey, both needing to be completed within an exceptionally tight deadline. Our experienced Project Managers, alongside the highly skilled technical team, quickly mobilized to address the full scope of work. With a keen focus on quality and precision, every task was executed to the highest standards.

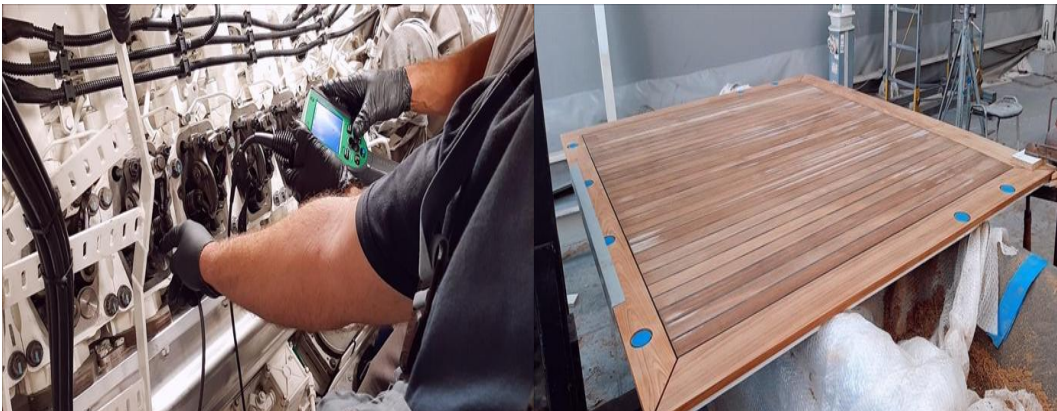
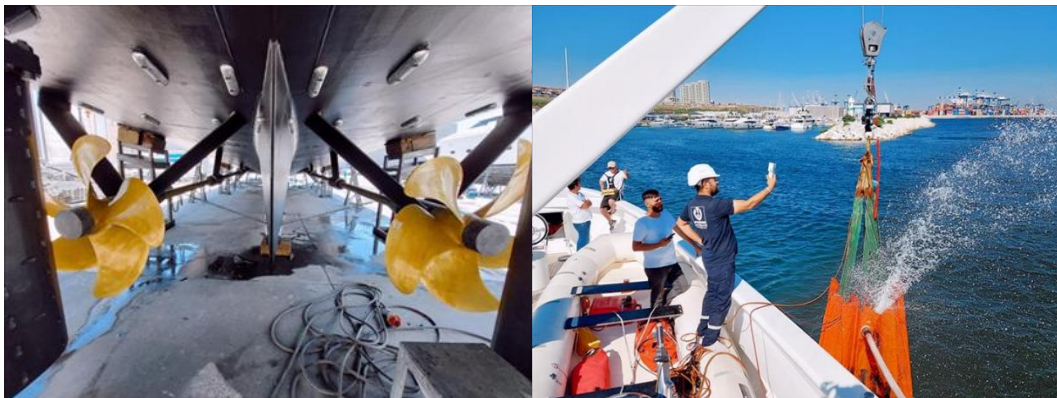
Despite the challenging timeframe, the team worked tirelessly, ensuring all requirements were met without compromise. Thanks to their relentless dedication and expertise, the project was completed not only on time but with results that far surpassed the client's expectations. The yacht was able to leave our marina promptly, fully prepared and in peak condition for its next journey, a testament to the efficiency and professionalism of Axis Orient's team.

Integrated Technical Overhaul & Class Renewal

Comprehensive 5-Year Survey scope in full compliance with Lloyd's Register (LR), including:

- Mechanical systems inspection and overhaul
- Shaft alignment and rudder system calibration
- Lightweight Survey with onboard recalibration
 - Electrical system integrity test
- Tank refurbishment with internal sandblasting

Outcome: All systems returned to OEM specifications or above, with zero deviation upon LR final audit.



PROJECT 6: 174' AMELS



PROJECT 7: 170' CANDIES SHIPBUILDERS (formerly HOUMA)

Heavy-Structure Refit & Full-System Restoration – 9-Month Technical Campaign

Axis Orient led a full-scale refit of this 170' custom yacht, overseeing a comprehensive renewal of both structural and technical systems over a 9-month period. This project combined steel renewal, major mechanical overhauls, habitability upgrades, and critical systems servicing—executed in parallel under strict scheduling and quality controls.

Structural & Stability Upgrades

- Renewal of approx. 30 tons of steel plating, with simultaneous replacement of crew cabins
- Full revision and update of Stability Booklet in line with structural changes
 - Tank cleaning, sandblasting, and coating of 12 tanks⁴

Mechanical & Propulsion Systems

- Major service of main generators, including alternator replacements
 - Emergency generator engine service
- Bow thruster overhaul with shaft laser alignment
- Hydraulic pump maintenance and rudder disassembly/reassembly
 - Valve replacements across multiple systems
 - Keel coolers service and renewal
 - Custom propeller coating application

Electrical & Power Distribution

- Main switchboard breaker maintenance
 - Transformer replacements
- DEIF system diagnostics and calibration
 - Battery renewal throughout vessel
 - Megger testing and load bank trials

HVAC & Water Systems

- Guest and crew A/C system maintenance
- Installation of new UV sterilizer system
 - Reverse osmosis system service
- Oily Water Separator (OWS) overhaul

Electronics & Safety

- Fire alarm system maintenance and certification
 - Navigation electronics inspection and tuning
 - Stabilizer system maintenance
- MIELE systems serviced by certified technicians
 - Tender & Auxiliary Equipment
 - Major servicing of tender units
 - Fuel and compressed air line renewals

Outcome: *A complete lifecycle extension and modernization of the vessel, restoring critical systems to peak performance while upgrading structural and hotel functionalities to current operational and regulatory standards.*



PROJECT 8: 166' HEESEN

While cruising from Turkey to the Maldives, our client's yacht faced an unforeseen mechanical issue when one of the shafts malfunctioned at sea. This created a challenging situation, but thanks to the outstanding communication between Axis Orient Technical Services and the yacht's crew, the vessel managed to make its way to Axis Orient with only one engine operational, ensuring it reached safety.

Once the yacht arrived, we immediately took charge of the situation. Understanding the urgency, our team wasted no time in sourcing the required special shaft bearings from international suppliers, ensuring there would be no unnecessary delays. The Axis Orient Technical Department went above and beyond, working tirelessly, including overtime hours, to carry out the repairs. With remarkable efficiency and precision, the team addressed the issue in record time, ensuring the yacht was fully operational and ready to resume its journey.

Due to the professionalism, expertise, and commitment of our team, the yacht was able to continue its voyage without any disruption to its original itinerary. The client left our marina deeply impressed with how quickly and seamlessly the issue was resolved, knowing they could rely on Axis Orient for top-notch service even in the most unexpected situations. The swift resolution not only ensured the yacht's continued success on its journey but also reinforced the trust and satisfaction of our client.

Emergency Shaft Repair and Voyage Recovery Protocol

- Urgent intervention during transoceanic voyage due to propulsion failure
 - International sourcing of specialized bearings within 72 hours
 - Drydock bypass using in-situ mounting and laser alignment
 - 24/7 shift rotations to ensure delivery within itinerary window

Outcome: Yacht resumed planned route to Maldives with zero additional downtime.



PROJECT 9: 165' TURQUOISE

The Axis Orient Technical Department, backed by a dedicated team of experienced project managers, highly skilled engineers, expert technicians, and trusted contractors, provided exceptional services that were carefully tailored to meet the unique and specific needs of the client. Every aspect of the project was handled with the utmost professionalism, ensuring that the client's requirements were not only met but exceeded, all while maintaining the highest standards of quality and efficiency.



PROJECT 10: 164' ADA YACHT WORKS



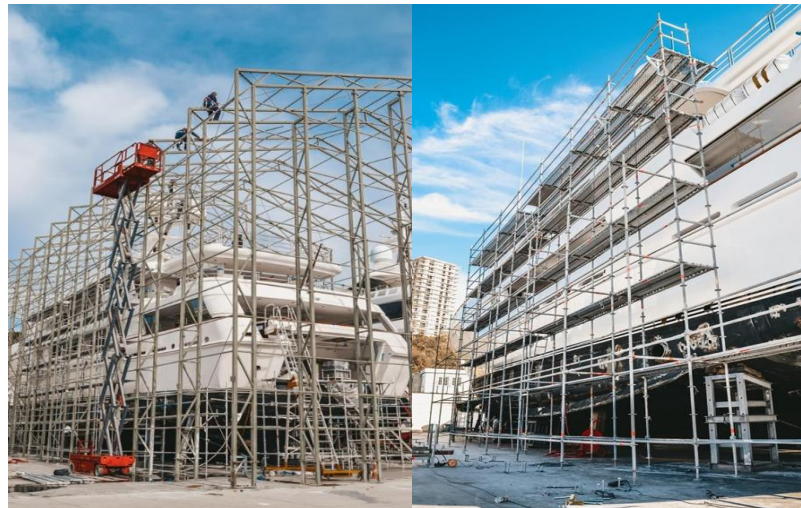
PROJECT 11: 161' ROYAL HAKVOORT

In this project, the Axis Orient Technical Department expertly managed a comprehensive and intricate refit of the yacht, which included extensive mechanical and electrical upgrades. Our team of highly skilled professionals also took on a variety of interior improvements, ensuring that every area was carefully refreshed and upgraded. A standout element of the project was the complete renovation of the dressing room, which was transformed with meticulous attention to detail and craftsmanship. From the structural upgrades to the interior refinements, every aspect of the yacht was carefully addressed, ensuring it was restored to the highest standards of quality and elegance. The result was a fully revitalized vessel, showcasing superior workmanship and precision at every turn.

Interior Structural Reconfiguration & Systems Redesign

- Demolition and rebuilding of master dressing room with acoustic dampening
 - HVAC redistribution and power line rerouting for new layout
 - Joinery and finish work matched to original yard spec
- Electrical upgrade to accommodate increased load demands

Outcome: *Seamless functional and aesthetic upgrade completed without structural compromise.*



PROJECT 12: 148' ORKUN YACHTING



PROJECT 13: 141' BAGLIETTO



PROJECT 14: 131' SUNSEEKER



PROJECT 15: 116' AB YACHT

The yacht approached Axis Orient with the aim of addressing significant issues with its paintwork and uneven surfaces. Metal coatings, particularly on yachts, present one of the most complex challenges in the industry, requiring the highest level of precision and expertise to achieve a flawless result. A truly perfect finish involves multiple layers of paint, specialized coatings, and a meticulous process to ensure optimal adhesion, durability, and a mirror-like glossy shine that withstands the test of time.

Our highly skilled team took on this demanding task with exceptional care and attention to detail, selecting only the finest Awlgrip Paint Products to ensure a long-lasting, smooth, and visually striking finish. Each stage of the process was executed with absolute precision, from the preparation of the surfaces to the final layer of paint. The result was a complete transformation of the yacht's appearance, with an immaculate finish that not only enhanced its aesthetic appeal but also provided lasting protection against the elements. The client was thoroughly impressed with the exceptional quality, smoothness, and overall appearance of the work, leaving with a vessel that looked as stunning as the day it was first launched.

High-Spec Paint System Renewal with Metal Surface Correction

- Surface correction of metal substrate with 3-stage levelling
 - Application of high-adhesion Awlgrip Paint System
 - Final polish achieving mirror gloss across all planes
- Environmental protection coatings for UV and salt resistance

Outcome: Flawless surface with long-term protection; visual impact akin to launch condition.





PROJECT 16: 116' AZIMUT



PROJECT 17: 102' CdM



PROJECT 18: 100' LIMAN



PROJECT 19: 96' FERRETTI

This yacht has been a valued and trusted client of Axis Orient for many years, and we believe that the loyalty and trust of our customers is the ultimate testament to the quality of our work. Over the years, we have provided a comprehensive range of refit services, ensuring that the yacht remains in top condition, constantly meeting and exceeding the highest standards of performance, luxury, and reliability.

The entire Axis Orient Technical Department takes immense pride in looking after this exceptional vessel. Our dedicated team, made up of experts across various fields, ensures that every detail is meticulously attended to. From routine maintenance to major refit projects, we work tirelessly to ensure that the yacht's systems and equipment are operating flawlessly. Our priority is to ensure a smooth, safe, and worry-free experience for the yacht's guests, ensuring that every cruise is free from any operational concerns.

The long-standing relationship we have with this yacht is a reflection of the trust and confidence we have built over the years, and it is a partnership we value deeply. We remain committed to delivering the highest level of service and excellence, ensuring that this yacht continues to sail smoothly and efficiently for many more years to come.

